

M3 Style Silver / Chrome Gauge Ring Installation For BMW E90 / E91 / E92 / E93 Removing Cluster From Vehicle

--Note that E46 Cluster Is Shown, E90 Removal is very similar--

1.) Remove the 2 screws holding the gauge pod into the dash using the T-20 Torx Key



2.) Carefully pull the pod out of the dash. Unclip the wiring harnesses by depressing the tabs (A) and lifting the harness lock (B)



3.) Carefully remove the display buttons but pulling firmly



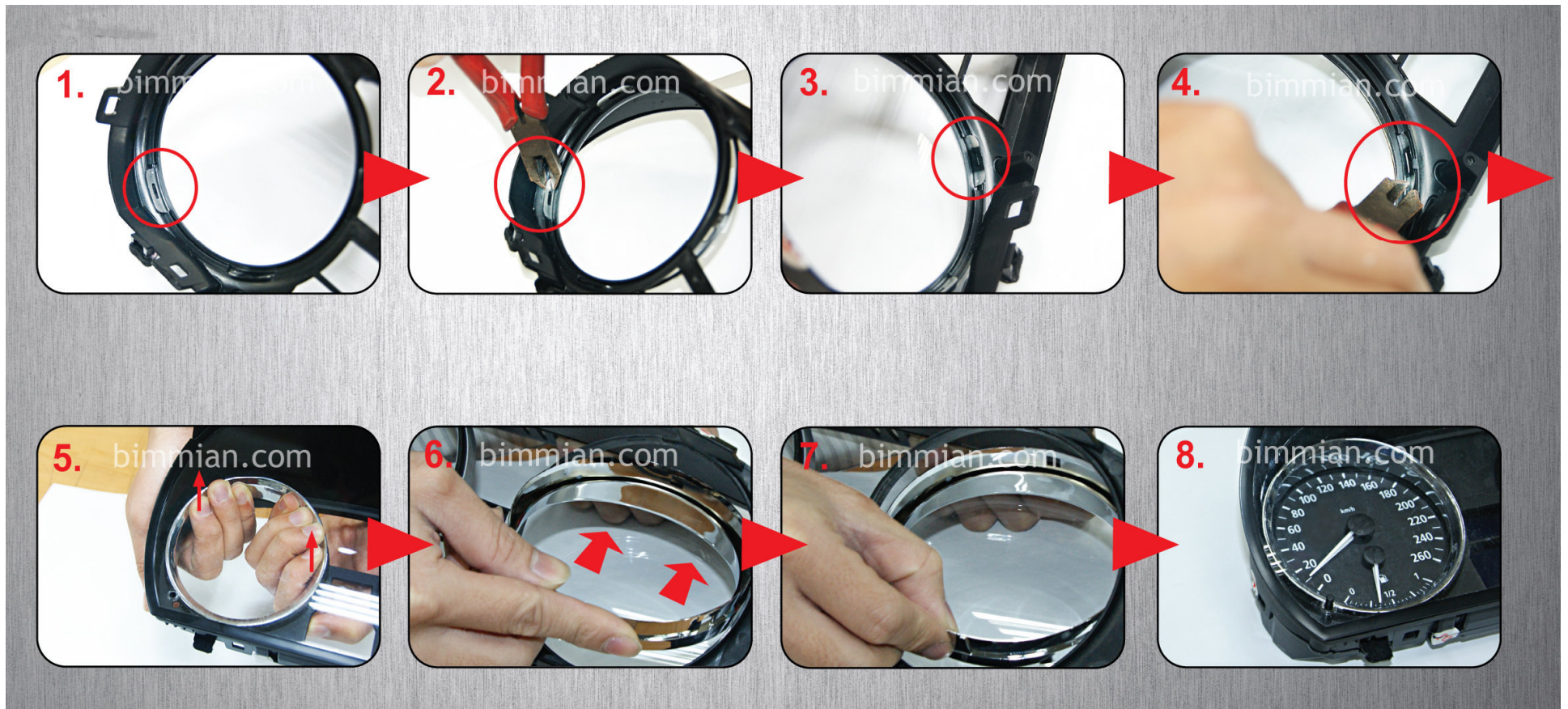
4.) Using the T-10 Torx key remove the 4 screws holding the gauge pod cover to the gauge panel.



5.) With the cover removed carefully flip the gauge pod over supporting the gauge panel with your other hand as to prevent it from dropping to remove the gauge panel from the front of the gauge pod.



M3 Style Silver / Chrome Gauge Ring Installation For BMW E90 / E91 / E92 / E93 Ring Installation



- (1) There are 5 clips that hold your original rings in place. Locate the two tabs nearest the bottom of the ring. (2) Use pliers to cut off this clip so that the ring can be removed as shown in (3). (4) Repeat for other lower clip. (5) Unclip the remaining 3 clips and lift upwards and slide old ring out. (6) Insert new ring through the back of the housing. (7) Line up clips and fasten the clips on the new ring to the housing. (8) Repeat for other gauge, Reassemble cluster and enjoy!